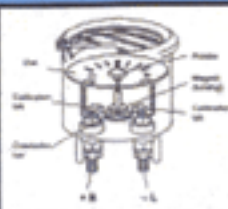
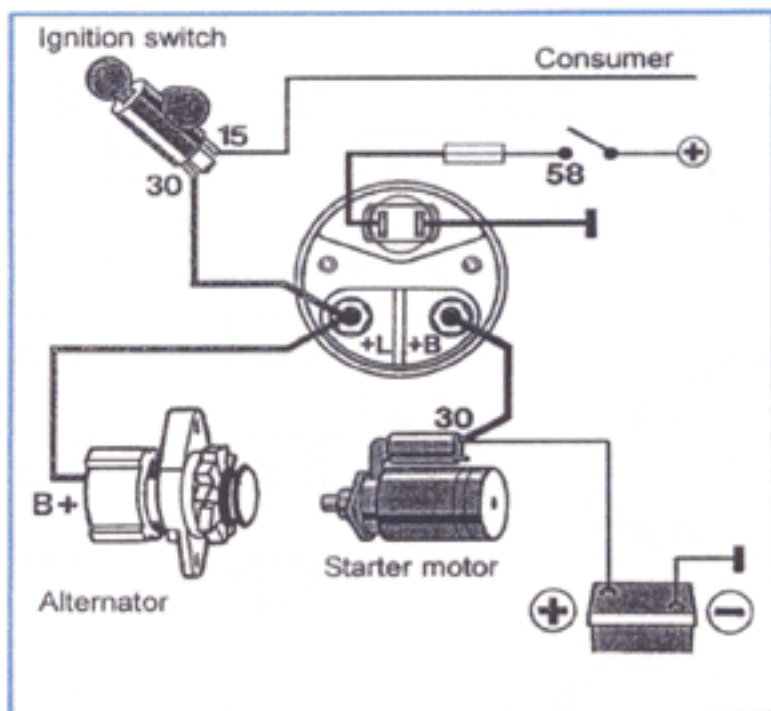


Ammeter

Instrument Description
Generic
Instrument Construction
**MARINE
Ocean Line
Black**

The Ammeter is branched into the circuit either directly or through a shunt so that current flow is measured and shown on the instrument. The Ammeter can give an accurate indication of the system battery charge and discharge condition.

Circuit Diagram A

Test Procedure

Use a Multimeter set to Amps, read between +L and +B to confirm correct function.

Date: October 2002 - Steve Wilson - IAM Product Specialist
 Siemens VDO Trading Limited
 36 Gravelly Industrial Park, Birmingham, B24 8TA.
 Telephone No. 0121 326 1271 Fax No. 0121 326 1299
 e-mail: steve.wilson@vdo-kienzle.co.uk